

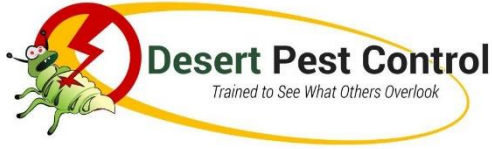


DESERT PEST CONTROL SERVICES

Trained to See What Others Overlook

Subsidiary of

Desert Group  ديزرت جروب



DESERT PEST CONTROL SERVICES

Trained to See What Others Overlook

We take immense pleasure in introducing **Desert Pest Control Services**, a Pest Control Service provider and a **subsidiary** of **Desert Group**.

Our Mission

To be a leader in the Pest Control Industry by providing quality services that exceeds the expectations of our customers.

We believe in safeguarding the environment hence we only use products that are Fully approved by **Dubai Municipality and are Biodegradable**. We use a range of chemicals in our day to day activity depending on the relevant conditions and circumstances. MSDS and details of all chemicals used can be provided. **All chemicals used by us are of low toxicity, bio degradable, non staining and odourless.**

All our field staff have passed the proficiency exam set by Dubai Municipality Pest Control division.

We carry out regular treatments to all Domestic and Commercial premises which include Offices, Buildings, Hotels, Warehouses, Schools and Staff Accommodations for the control of Crawling Insects, Rodents and specialized treatments against Termites.

What We Do?

We provide Pest Control treatments to Domestic Premises (Apartments & Villas) and Commercial Premises - Offices, Buildings, Hotels, Schools, Shops, Warehouses and to Staff/Labour Accommodations.

Crawling Pest Control Services

Gel Baiting/Granular Ant Bait/ Spot Spraying for the control of crawling pests such as Cockroaches and Ants.

Bed Bug Control

Intensive Pest Control Service against the menacing Bed Bugs.

Pre Construction and Post Construction Termite Treatment

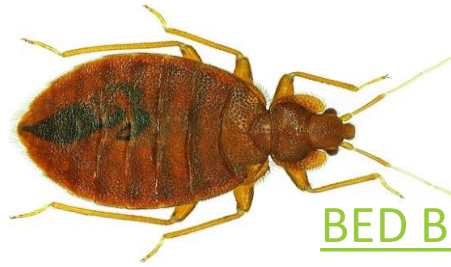
Specialized treatment against Termites by creating Chemical barriers to prevent Termite infestation.

Rodent Control

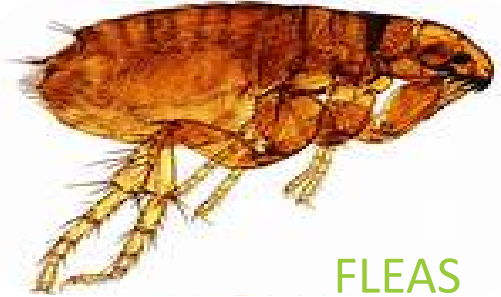
Safe Eco friendly rodent control service for both Domestic and Commercial premises whereby we use baits set in locked bait stations backed up by physical methods such as Traps and Glue boards.



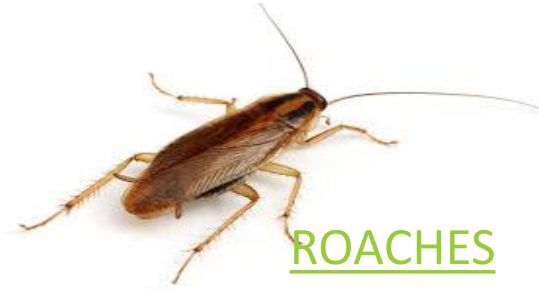
ANTS



BED BUGS



FLEAS



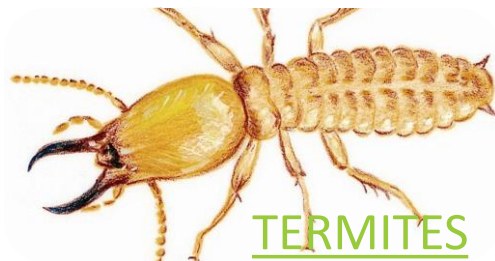
ROACHES



SPIDERS



WASPS



TERMITES



RODENTS

WHERE DO PESTS BREED?



Fountains/water features with stagnant water



Accumulated water from sprinklers, rains or leakages



Unused/uncovered swimming pools



Overgrown & poorly maintained trees and bushes



Strewn garbage, water bottles



Old vehicles and non-salvageable items



Fruits, pet food, nuts and birdfeed



Abandoned and unkempt villa areas



Garden waste and debris

HOW TO PEST-PROOF YOUR PREMISES



ELIMINATE FOOD SOURCES

- Don't leave pet food, water bowls and litter overnight.
- Remove ripened fruits from your private garden as they can be eaten and stored by rodents.
- Avoid using animal manure in your garden; instead use plant compost or peat moss and chemical fertilizers.
- Avoid leaving feed for birds, squirrels or other wildlife in the open.



KEEP OUTDOORS TIDY

- Dispose of your waste in allocated garbage bins and keep your garage and garden tidy.
- Keep a tight lid on trash and wash your bins regularly.

CONDUCT A ROUTINE CHECK

- Before leaving on a vacation, turn off your fountains and water features, empty the water and cover with a plastic sheet.
- Seal cracks and crevices in walls, around fountain, behind sinks, around pipes, electrical conduit, windows, A/C ducts, electric cables & pipes.
- Trim your trees' limbs at least four feet away from roofs and utility wires.
- Set tamper-resistant traps made of durable plastic or metal for rodents, away from children and pets.

DE-CLUTTER & DISPOSE

- Get rid of stacked newspapers, magazines and carton boxes. Children's toys and shoes left outside are perfect hideouts for spiders and other pests.
- Arrange stored materials and clear out unwanted items to prevent rodents from hiding behind them to ensure there is no infestation.
- Use an aerosol pesticide to clear spider webs and safely dispose of webs with eggs inside closed bags.

Unkempt and Poorly Maintained Homes will Attract and Create an Ideal Breeding Site for Pests and thereafter, Attract a Notice of Violation from Concerned Authorities.



GENERAL INFORMATION ON PESTS & THEIR CONTROL

ANT CONTROL

As the majority of ant species prefer sunny climates, our environment is perfect for ants to thrive. Ants are ubiquitous. There are around 15,000 ant species and subspecies worldwide. Our buildings are ideal for ants because they provide shelter, food, warmth and water. You may see them in roof voids and subfloors, in your kitchen, along the edge of the building and in and around pet bowls.

Major Species Of Ants Found:

Sugar Ants, Samsoun / Samsun Ants (*Pachycondyla Sennaarensis*), Fire Ants (*Solenopsis Germinata*), Carpenter Ants, Pharaoh Ants (*Monomorium Pharaonic*)

Appearance:

Tiny, major workers 3mm long with reddish-yellow body and end of gaster black; minor workers 2mm long with head and mesosoma pale in color; two nodes. Polymorphic, with major and minor workers.

Life Cycle:

The **life cycle** of the **ant** consists of four stages: egg, larva, pupa, and adult. Fertilized eggs produce female **ants** (queens, workers, or soldiers); unfertilized eggs produce male **ants**.

Egg: Ant eggs are oval shaped and tiny (they are on the order of 1 mm long, but the queen's egg is many times larger).



Notes

Commonly seen in backyards, gardens and parks. Preferred nesting sites in warm and humid areas near sources of food and water. Forms visible trails from nest. Indoors, ants will use electrical and telephone wires, plumbing and other utility lines as trail routes. Has a wide preference for foods with protein and sugar content and forages very actively for water sources that can be unusual - aquariums, pet dishes, condensation on plumbing fixtures, air conditioners, house plants and even from wounds of immobile patients in healthcare facilities.

Colony :

From small with single queen and hundreds of workers to large with several queens and several hundred thousand workers.

Ants Can...

Spread disease because they can scavenge for food in garbage areas, dog excrement and other unsanitary areas. These disease carrying organisms can then be tracked into our homes and onto our food.





Bait:

We will apply special ant bait – Granular or Gel depending on the problem and circumstances - which is licensed and formulated for Ant control. This is relatively safe for you and your children and pets.

The bait is applied to out of reach places for your added peace of mind in specially designed Ant Bait Stations.

Surface Spray:

We may apply a special surface spray which is licensed and formulated for Ant control. This is applied to the perimeter of your home or building.

What You Can Do With Our Help and Advice

Sanitation: You can reduce food and water available to Ants. One way you can help is to avoid keeping rubbish indoors overnight.

Stock: Ensure regular stock rotation and also inspect incoming food stock.

Storage: Ensure food is stored above the ground and clear of walls.

Garbage: Ensure your garbage is kept secure and locked.

Track down where ants are coming in and seal off the entry point.

Clear up any sticky residues on worktops, because ants are attracted to sweet things.

Cover up any foodstuffs which could be a food source for ants.





Bite and Sting:

There are some species of Ants such as Fire Ants that can both bite and sting and cause much discomfort.

Few years back there was a fatality in Al Ain due to Ant bite. Ant bites can cause severe allergies.

Have unsightly ant trails and mounds. In some instances ants have caused cracks in paths due to their excavations.

What We Do

Set up a guaranteed program to control ants in a building and to help reduce their populations in their surrounding environment and advise how you can help reduce future problems. It is not possible to completely eradicate ants in the grounds surrounding a building as this is determined by environmental factors such as sunlight, rain, contact with soil and the efficacy of the pesticides that are licensed for use in UAE.

Inspect: We will carry out a survey and report our findings.





GENERAL INFORMATION ON PESTS & THEIR CONTROL

COCKROACHES

Our buildings are ideal for cockroaches because they provide food, water, warmth and shelter. You will probably have a problem with the prolific German Cockroach. If you see the German Cockroach during the day or in areas where there is no food available such as bedrooms then you may have enormous populations.

MAJOR SPECIES OF COCKROACHES FOUND THE UAE

German Cockroaches (*Blatella Germanica*)

Appearance:

Adult : 12-15 MM long, yellowish brown with two dark brown vertical bands behind the head, females larger than males.

Life Cycle:

Eggs (20-40) contained in egg-case (ootheca) which is carried about by the female, protruding from her abdomen. Egg-case is glossy brown, 8mm long. Nymphs resemble adults and moult 6-7 times before becoming fully grown. Adults can live up to 4 months.

Notes:

Smaller and lighter in colour in comparison to the American cockroach, it is the most common household pest. It feeds on almost all kinds of food, and is usually found infesting kitchens, especially in cracks and crevices. Young are protected by the egg-case which is carried about by the female till just before hatching. Both males and females have fully developed wings, though they are seldom used.



American Cockroaches (*Periplaneta Americana*)

Appearance:

Adult : 35-40 MM long, reddish to dark brown in color.

Life Cycle:

Eggs (14-16) are contained in the egg-case (ootheca) which is deposited by female in a protected place. Nymphs resemble adults but are flightless. Freshly moulted nymphs are white and they moult 9-13 times before becoming adults. Adult life span is 14-15 months.

Notes:

The large cockroach is encountered flying into homes. Not a regular house-dweller, it prefers dark, moist and warm areas, such as drains and sewers.

Cockroaches Can...

Spread disease by transporting bacteria and organisms from sewers and other unsanitary sources to food and food handling surfaces and utensils.

Seriously harm the reputation of a business. The appearance of Cockroaches in the public areas of a business can cause a huge loss of goodwill. Even your staff can find the presence of Cockroaches quite repulsive.

Contaminate food with their droppings, their dead casts (outer skeleton), discarded Cockroach egg cases and even dead Cockroaches.

Cause unpleasant odours due to secretions from their mouths and outer shell. These are particularly severe when large populations are present.

Signs of Cockroach Activity Include:

Droppings Cockroach droppings resemble pepper and larger droppings of around 2mm can have ridges along their sides and have blunt ends

Casts Cockroaches cast off their outer body or skeleton during their life and you may notice these in various areas around your home or building.

Spoilt Food Cockroaches will eat food that has not been properly stored and vomit back onto the food.

What We Do

Set up a guaranteed program to control cockroaches in a building and its surrounding environment and advise how you can help reduce future problems.

Inspect We will carry out a survey and report our findings.

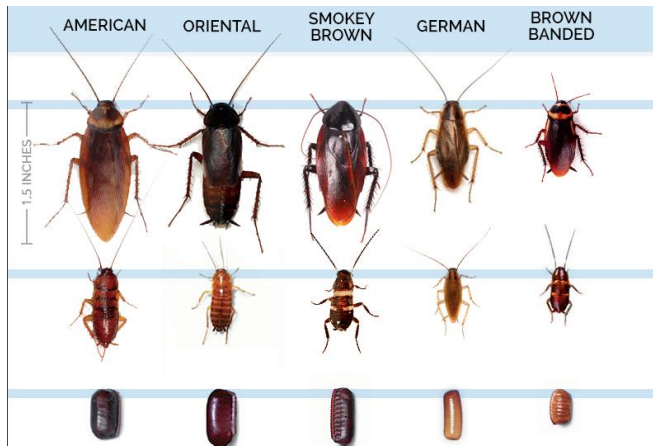
Bait We will apply special bait which is licensed and formulated for Cockroach control. This is very safe for you and your children and pets. The bait is applied to out of reach places for your added peace of mind.

Surface Spray We may apply a special surface spray which is licensed and formulated for Cockroach control. This is applied to the perimeter of your home or building.

What You Can Do with our Help and Advice.

Sanitation You can reduce food and water available to Cockroaches. Even small pockets of moisture can keep Cockroaches nearby as they can go without food for over a month. One way you can help is to avoid keeping rubbish indoors overnight.

Proofing We can advise you on ways you can proof your home against Cockroach entry.

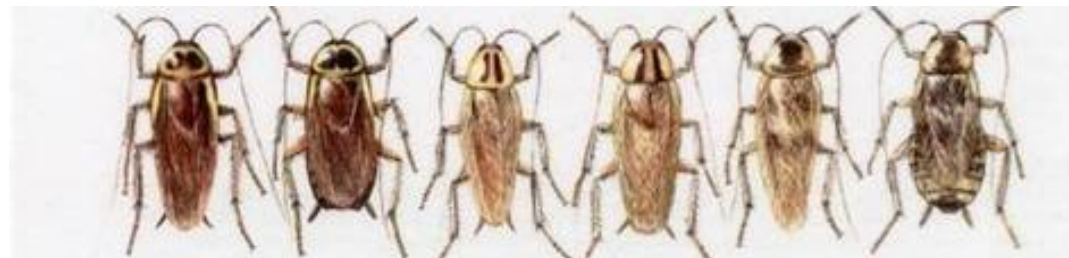


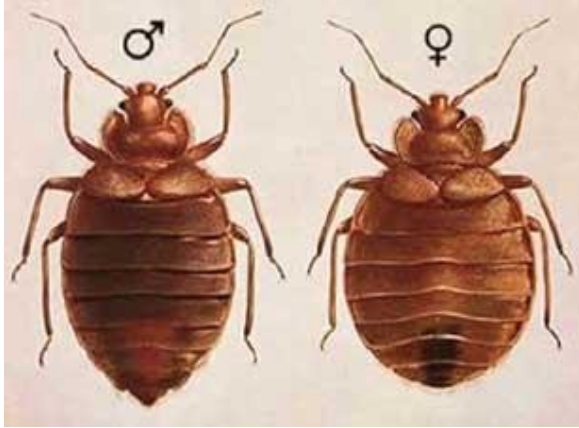
Maintenance -This may include simple measures such as fixing mesh over holes to prevent Cockroach entry and to seal cracks and crevices and placing proper drain covers.

Stock - Ensure regular stock rotation and also inspect incoming food stock.

Storage - Ensure food is stored above the ground and clear of walls.

Garbage - Ensure your garbage is kept secure and locked.





GENERAL INFORMATION ON PESTS & THEIR CONTROL

BED BUGS

Bed bugs have had a major resurgence in the U.A.E. and every year the problem seems to be getting worse.

Although information on actual numbers of Bed Bugs in the U.A.E. is not readily available, it seems more Bed Bug control jobs are going to fewer specialist companies such as Desert Pest Control.

Appearance:

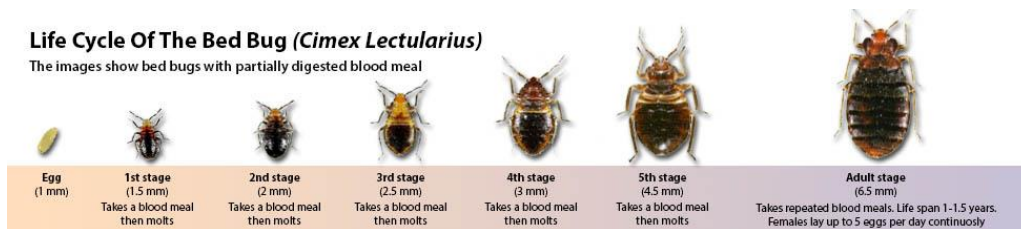
Adults are 4-5 mm long, wingless, rounded, flat and reddish-brown. New hatched nymphs are translucent; nymphs resemble the adults and grow through 5 moults before reaching maturity.

Life Cycle:

Eggs (up to 350), 0.8-1.3mm long, ink-bulb-shaped, laid in cracks and crevices near host and cemented in place by glue; 5 nymphal stages lasting up to 50 days; adults can live for more than 1 year without feeding.

Life Cycle Of The Bed Bug (*Cimex Lectularius*)

The images show bed bugs with partially digested blood meal



GENERAL INFORMATION ON PESTS & THEIR CONTROL

BED BUGS

Notes:

The common Bedbug (*Cimex lectularius*), is found in temperate regions across the world. Usually found in human habitation, hiding in cracks and crevices, in beds and bedding in the daytime, emerging at night to feed on human blood.

Their bites don't cause much irritation, but the bugs possess stink glands on their thorax that cause a disgusting odour when disturbed. Though they can harbor pathogens in their bodies, including plague and hepatitis B, they have not been linked to the transmission of any disease and are therefore not considered a medical threat.

However, humans can get skin infections and scars from scratching bites. For causing disgust and sheer nuisance value, Bedbugs are perhaps the No. 1 pest!

Bed Bugs can:

Cause major distress with their feeding habits.

They feed on our blood at night when we are asleep. Cause swelling and some skin irritation, Cause allergic reactions in some people

GENERAL INFORMATION ON PESTS & THEIR CONTROL

BED BUGS

Important Information for Hotels:

We understand the need for complete confidence when dealing with a bed bug eradication program. We also understand the need to respond promptly and ensure the room can be made available in the shortest possible time. We will endeavor to ensure your downtime is kept to an absolute minimum where possible.



GENERAL INFORMATION ON PESTS & THEIR CONTROL

BED BUGS

What we do

To enable us to have an effective bed bugs control program, we thoroughly inspect your building concentrating on your sleeping areas. Bed bugs are nocturnal meaning they come out after dark and this is also when they feed.

Bed Bugs can be found in mattresses, bed bases, crevices and even behind pictures on the wall. Once we locate the population, we can start our integrated program and bed bugs treatment. We treat all affected areas with safe insecticides and concentrate on their harbourages so most of the insecticide is out of sight.

What you can do with our help and advice

You will need to wash bedding and clothing in hot water. Thorough vacuuming of all hard floor areas, carpets, rugs and soft furniture is also required. Double bag the contents of your vacuum cleaner and dispose in the rubbish bin immediately.



BED BUGS

▶ Where Will I Find Bed Bugs?

- ▶ Bed frames and headboard crevices
 - ▶ Mattress seams
 - ▶ Carpets and underlay
 - ▶ Skirting boards
 - ▶ Between timber floorboards
 - ▶ In cracked or broken plaster, behind peeling wallpaper
 - ▶ Inside electrical sockets and fittings
 - ▶ Drawers and cupboards
 - ▶ Wardrobes
 - ▶ Bedside cabinets
-
- ▶ An inspection by Desert Pest Control will help to confirm a problem and enable our Technicians to offer the best solution for bed bug treatments.
 - ▶ As part of our bed bug services, Desert Pest Control also passes on our expertise in the form of training for your staff on bed bug early warning signs. Contact our team to find out more.





GENERAL INFORMATION ON PESTS & THEIR CONTROL

TERMITES

Preventative

Physical and chemical barriers are designed to deter termites. After inspection and evaluation we can provide the best options for your particular situation.

Appearance:

Adults 3-4mm, workers creamish white with brown head; soldiers with brown head and large jaws (mandibles), sometimes modified into a specialised “spout” through which they squirt a foul smelling liquid on attackers.

Life Cycle:

Queen lays thousands of eggs which are looked after by workers. Most eggs hatch into sterile workers and a few become soldiers and males. During favourable conditions, large numbers of reproductives swarm to form new colonies.

Notes:

Often called 'white ants', live in colonies consisting of workers, soldiers and king and queen. Subterranean termites live below the ground and construct mud tubes from the nest to food source - these tubes are a sure sign of infestation. Wood-nesting termites excavate nests in wood and leave behind characteristic signs of infestation - their pellet shaped frass or droppings. Large numbers congregate just before the rainy season to swarm - females and males fly off, mate and female then starts a new colony. Feed on dead/decaying wood, and can cause great (unseen) damage if not detected in time.

GENERAL INFORMATION ON PESTS & THEIR CONTROL

TERMITES

Termite Inspection

Termites cause many millions of dollars worth of damage to buildings in the world every year which is not covered by your household Insurance. Some people refer termite to white ant treatment but termites and ants are quite different insects. Termites are not a member of the ant family but the term white ant is firmly ingrained in the English language.

A termite inspection is recommended at least annually even if you have a termite protection system in place. In most cases, these termite protection systems make termites easier to detect but won't stop them from attacking your building.



Remedial - Undertaken When Termites are Found

After inspection and evaluation we can provide the best options for your particular situation. These are pesticide barriers for termites and installed by licensed pest control technicians. An in-soil pesticide barrier is applied into the soil under and around the foundations. Pesticides settle on termites and they ingest the pesticide and can eliminate the whole colony. Baits may also be used and they are ingested by the termites and can similarly eliminate the whole colony.

GENERAL INFORMATION ON PESTS & THEIR CONTROL

TERMITES

- ▶ Termites are widely regarded as a damaging pest to have in your home or business. Termites (sometimes known as ‘white ants’) can cause extensive damage to the structure of a building if they are not managed or controlled by qualified pest professionals.
- ▶ Whether it’s your home or business premises, it’s likely to be your biggest investment in terms of money, sweat and tears, so naturally you want only the best provider for all your termite control needs.
- ▶ Survey / Inspection - After Inspection we will discuss and suggest ideal treatment
- ▶ Quote - Prior to any treatment we will submit a detailed report and quote for approval
- ▶ Treatment With Warranty - Once our quote is accepted our team will provide and carry out the treatment using approved and long lasting chemicals. Treatments are environmentally friendly and safe for pets and children. Depending on conditions, we will suggest follow up treatments and give a warranty.





GENERAL INFORMATION ON PESTS & THEIR CONTROL

RODENTS

Our buildings are ideal for rats and mice because they provide food, water, warmth and shelter. For these reasons you may notice rats and mice inside buildings more in the cooler months.

MAJOR SPECIES OF RODENTS FOUND

House Mouse (Mus Musculus)

Appearance:

Adults brown to grey, furry, 10-16 cms including the 5-8 cms tail, large ears and relatively small eyes.

Life Cycle

Female may have 3-5 litters. Young (4-8 per litter) are born furless and blind, 19-21 days after mating. They reach sexual maturity in six to ten weeks. Life span of adults is about nine to twelve months.

Notes:

Mice cause damage to structures and property, and they may transmit diseases such as salmonellosis (food poisoning). They have a characteristic musky odor that identifies their presence - they are occasionally seen during daylight hours. Other signs of infestation are droppings, fresh gnawing and tracks. Nests are often found in sheltered locations and are made from fine shredded paper or other fibrous material. They prefer cereal grains, but will eat many kinds of food. They are sporadic feeders, nibbling bits of food here and there. They have keen senses of taste, hearing, smell, and touch and are excellent climbers and acrobats.

They will run horizontally along wire cables or ropes and can jump up 13 inches from the floor onto a flat surface and can squeeze through openings slightly larger than 1/4 inch in diameter.

GENERAL INFORMATION ON PESTS & THEIR CONTROL

RODENTS

Common House Rat / Roof Rat / Tree Rat / Black Rat (Rattus Rattus)

Appearance:

Adult : dark brown to black, 10-12cms, with a 15-20cms tail

Life Cycle:

Female can have up to 84 young in her lifetime. Life span of adults is around a year.

Notes:

It is the common rat found in our homes causing much nuisance and damage. It is an extremely agile creature, able to scale walls and walk across telephone wires with ease and. It builds its nest in walls, attics, vines or trees near and around homes.

Brown Rat/ Norway Rat / Sewer Rat (Rattus Norvegicus)

Appearance:

Adult : Brown, with whitish brown underparts, 18-20cms, with a 15-18cms tail.

Life Cycle:

Prolific breeders with about 60-70 young in a year.

Notes:

It is larger and more robust-looking than its common cousin the House Rat, and the tail is shorter. An excellent swimmer, it is found in sewers and drains in large cities, where it thrives in the damp, wet surroundings. It is usually limited to seaports and large cities.



GENERAL INFORMATION ON PESTS & THEIR CONTROL

RODENTS

Rats and Mice Can...

- Spread disease to humans via their droppings or urine.
- Spread sickness and death via parasites such as fleas and intestinal worms.
- Cause extensive physical damage to electrical wires, doors, skirting boards, books, stored products, food containers and upholstery.
- Spoil and Contaminate food with their droppings, urine or fur.

Signs of Rodent Activity Include:

Droppings : New rodent droppings are shiny and pliable and within 2-3 days become dull and hard.

Mouse droppings are 3-6mm long and have pointed ends. Rat droppings are up to 12mm long and have blunted ends.

Rub marks : These are greasy smear marks and they are caused when rodents rub their fur against vertical surfaces such as walls.

Burrows : Rat burrows are normally found next to waterways and buildings.

Sounds : Rats and Mice are normally heard at night and they include squeaking in the case of mice and clawing and gnawing in the case of rats.

Nest : A rodent nest is usually made of rags and paper and cardboard.

Gnawing : Rats gnaw to keep their incisors down and use wood, metal, conduit and cables in order to do this.

When rats gnaw cables for instance this can expose bare wires and cause short circuits or fires.

GENERAL INFORMATION ON PESTS & THEIR CONTROL

RODENTS

What We Do



Setup a guaranteed program to control rodents in a building and its surrounding environment and advise how you can help reduce future problems.

Inspect We will carry out a survey and report our findings.

Bait We will set up rodent bait stations at various strategic locations in and around the buildings. These rodent bait stations securely hold the bait within the station which means that secondary poisoning of non target animals are greatly reduced to almost zero.

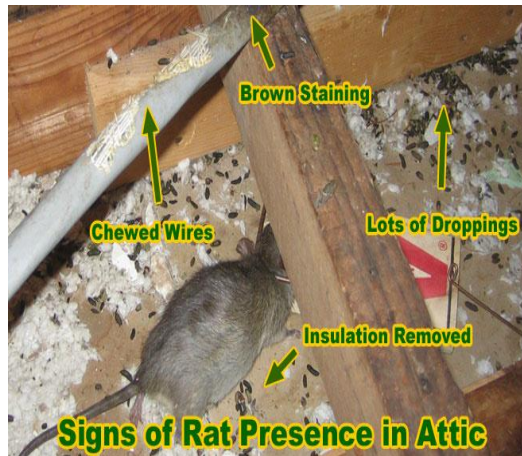
Break Neck Traps And Glue Boards We can set up specially designed traps where baits cannot be used.

What You Can Do with our Help and Advice

Sanitation You can reduce food and water available to rodents. One way you can help is to avoid Keeping rubbish indoors overnight.

Proofing We can advise you on ways you can help to proof your home against rodent entry.

This may include simple measures such as fixing mesh over holes to prevent rodent entry.



GENERAL INFORMATION ON PESTS & THEIR CONTROL

WASPS & BEES

- ▶ Being stung by a wasp or bee is a painful experience and can be life threatening to anyone who may be allergic to stings. However, it is possible to reduce these risks by taking sensible precautions when outdoors and ensuring that wasp or bee nests are properly managed.
- ▶ Wasps have the potential to attack in large numbers if their nest is disturbed.
- ▶ It is best to treat a nest earlier before numbers increase and the wasps become more aggressive, increasing the threat of stings during treatment.
- ▶ At Desert Pest Control, we can offer safe and convenient solutions to get rid of your wasp problem quickly. Our qualified technicians require just one 30 - 45 minute visit to treat a nest, so contact us today to book in your treatment.



GENERAL INFORMATION ON PESTS & THEIR CONTROL

WASPS & BEES

- ▶ Wasps can also be confused with bees, in particular Honey Bees - however these vary in color from golden brown to almost black and are furrier than wasps.
- ▶ Only female wasps have a sting which they can use repeatedly, if they feel under threat. In most cases a wasp sting causes no long term harm, but it can be life threatening if you are allergic to stings. Treating a wasp nest is often the most efficient way to control a wasp problem and reduce the threat of stings.
- ▶ Wasps can build nests outdoors under eaves or, if they can gain access, they can find sheltered areas inside your home, such as wall cavities, roof spaces and attics. If a nest is discovered you shouldn't attempt to get rid of it yourself; find out more about our wasp/Bees removal services.



GENERAL INFORMATION ON PESTS & THEIR CONTROL

FLEAS

- ▶ Fleas are a common problem in homes, especially those with pets. You may discover a problem with fleas even if you do not have pets, if previous owners of your property kept cats or dogs.
- ▶ Fleas may also be carried on other, especially hairy, animals like rabbits, rats, mice and livestock.
- ▶ As parasites, the greatest concern about the presence of fleas in your home or business comes from their bites. Although these are not painful, they can result in an uncomfortable itch or rash. Your pets could also develop allergies to flea saliva.
- ▶ If you need help with fleas, call Desert Pest Control.

Fleas

QUICK STATS:

-  **Color:**
Dark reddish-brown
-  **Shape:**
Flattened side to side
-  **Size:**
1/2 - 3/8 inch long



Flea Treatments

Although fleas do not have wings, they have incredibly powerful elongated legs. These allow them to jump long distances and move easily between you and your pets, leaving behind itchy bites.

Successful control requires treatment of both your property and your pets, if you have them.

At Desert Pest Control, we offer safe, effective treatments for your home or business to ensure complete control of your infestation.

GENERAL INFORMATION ON PESTS & THEIR CONTROL

SPIDERS

Our buildings and gardens are ideal for spiders because they provide food and anchorage for their webs or soil for their tunnels

MAJOR SPECIES OF SPIDERS (Arachnida) FOUND.....

- Red Back Spiders
- Camel Spiders

Appearance:

Arachnid; adult 4-5cms, extremely small body and long legs
(cobweb spider)



GENERAL INFORMATION ON PESTS & THEIR CONTROL

SPIDERS

Notes:

Also called Daddy long Legs, Cobweb spiders these are common house dwellers. Well recognised because of their distinct long-legged appearance and webbing in corners and ceiling/wall joints. They are not technically considered pests, since they trap and consume several species of insects in the house, but their cobwebs give the home an unkempt and unsightly appearance. Jumping spiders do just that - they jump! They are small, usually black with red or white markings, and are often found in windows. They rarely bite. Sheet-web or orb spiders have a pair of dark bands across their yellowish head-thorax and abdomen. They are common on shrubs and weeds around the house. Most people have misconceptions about spiders : they are pictured to be poisonous (even deadly), and likely to attack at any time. This not true. There are some species of spider that have a venomous bite, but only a few are found in the UAE Spiders are largely beneficial since they feed on other pests.



GENERAL INFORMATION ON PESTS & THEIR CONTROL

SPIDERS

Spiders Can...

Bite and cause pain and even death. Luckily deaths are rare in the UAE.
Have unsightly webs and can collect dust and debris.
Cause panic and alarm particularly around children.

What We Do

Set up a guaranteed treatment to control spiders in a building and advise how you can help reduce future problems.

Inspect We inspect your property and identify areas of concern.

Surface Spray We apply a surface spray that is licensed and formulated for spider control. This would be to walls and paths, gutters and baseboards and soffits.

What You Can Do With Our Advice

Wear gloves when gardening or handling soil

Wear sensible footwear - particularly at night.

Be wary of wandering ground dwelling spiders after excavations or landscaping.

Avoid leaving toys out overnight. A spider may use these as a nest.



Desert Group  ديزرت جروب

We do provide Annual Contracts and One off treatments depending on requirements and circumstances. We also provide consultancy pertaining to Integrated Pest Management and the charges could be adjusted against the annual contracts. To know more about our company and services provided please visit our web site www.desertpestcontrol.ae

Whether Indoor or Outdoor, Pests can be a nuisance and pose a danger to your health.

Some of the major projects handled by our Manager and Staff, over a period of 30 years in the Pest Control Industry in the UAE include -

Atlantis The Palm - Hotel, Palm Jumeirah

Agastaya Nutrifood - Office, Warehouse, Production Plant

Arabian Packaging - Al Ghurair Group - Offices, Warehouses, Factory & Staff Accommodations

Al Quasimi Group - Sharjah - Luxury Villas - Offices - Buildings

Bvlgari Resort Dubai - Luxury Villas and Apartments

Chaloub Group - Allieds / Real Emirates - Having Warehouses all over Dubai and Shops in Most of the Major Shopping Malls in Dubai.

Create Specialists Fabrication Service LLC - Offices, Warehouses



Desert Group  ديزرت جروب

Dubai Scholars - School

Dubai Investments Real Estate - DIRC - Residential Buildings

Dunes - Hotels and Furnished Apartments

Espace Real Estate - Various properties in Springs, Meadows, Emirates Hills.

Harbor Real Estate - Buildings, Apartments, Villas, Offices

Jaleel Holdings - Hypermarkets, Supermarkets, Warehouses, Villas, Offices, Staff Accommodations

Jumeirah English Speaking School - Arabian Ranches and Jumeirah - Entire School

Meraas Group - Buildings - Sub Contract

Orient Group - Offices, Staff Accommodations

**OSCO SP - Subsidiary Of Shapoorji Pallonji - A Major Facilities Management Comp.
Offices, Staff Accommodations.**



Towers.



Desert Group  ديزرت جروب

Out Of The Box LLC - Offices, Warehouses, Staff Accommodations

Sharaf Group - Offices, Villas & Buildings.

Desert Group - In House - Offices, Warehouses, Showrooms, Staff Accommodations

For Enquiries, Consultancy and Quote,

Contact us on 055 719 0359

Or e mail us at ernest.pais@desertgroup.ae

